



**Cormack**  
PACKAGING

1800 801 758 | [www.cormack.com.au](http://www.cormack.com.au)

**WATER**

**CARBONATED**

**ISOTONIC**

Beverage  
closures  
to suit  
your  
brands  
direction.

Leading brands depend on us to deliver superior closures. Our global relationships and innovative designers give us a distinct advantage.

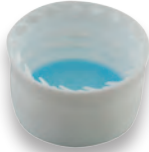
Whatever your product needs, we can deliver you exceptional packaging!

### Water/CSD 1810 28mm Flat Closure



- Suited to still and pressurised water and carbonated products in PET.
- Available lined and unlined.
- TE band that separates cleanly.
- Pressure retention up to 4.2 gas volumes.
- Mid height PCO finish.
- OTC printing available.

### Water/CSD 1881 28mm Flat Closure



- Suited to still and pressurised water and carbonated products in PET.
- Complies with industry standards for CSD and non carbonated filling.
- Short height, lightweight industry standard closure.
- Available in a range of colours with UV print options.
- 120 knurl pattern for functional consumer gripability.
- Improved environmental footprint.

### Water 28mm Pull Push



- Suited to water and juice products.
- Range including induction lined and wedge seal caps.
- Double tamper-evident caps available.
- Available with and without overcap.
- Available with vented overcap to allow air-flow if swallowed.

### Water/Isotonic/Juice 28mm Hinged



- Suited to water, isotonic and juice products.
- Double tamper-evident.
- Suitable for 28PCO neck finish.
- Butterfly dual action hinge to keep the open cap away from the facial plane.
- Two piece cap allows for colour options for brand awareness.

### Isotonic/Juice 38mm VHJ 2 Start Compression Lined



- Suited to isotonic and juice products.
- Break band tamper evidence.
- Liner available in barrier, non barrier and custom options.
- Compression moulded liner.
- Lightweight, high strength closure.
- Suitable for high speed capping 800 bpm+.
- Excellent sealing and vacuum retention.
- Requires little or no steam/heat on filling and capping.
- Available with print options on top.

### Isotonic /Juice/Water 38mm Hinged



- Suited to isotonic, water and juice products.
- 1 piece closure, no loss of overcap.
- Butterfly hinged closure designed to fold away from the face.
- Spout shape for ease of drinking.
- Re-sealable closure.

### Juice Metal Lugged



- Wide range of diameters available to suit glass.
- Various coating options available to suit acidic and alkaline product.

### Bulk Water Closure



- Linerless technology.
- Lightweight closure using less plastic.
- Colour logo print and embossing available.
- PET Preforms to suit.
- Alternate foam lined cap also available.